



## In this newsletter:

- Enrolments: Currently **202** subjects are enrolled.
- eCRF: fill out a shock report for every shock in an arrhythmia episode
- REMINDER: always check the PRAETORIAN Score requirements before calculating the Score

## eCRF: Fill out a separate shock report for every shock in an arrhythmia episode

The primary endpoint of PRAETORIAN DFT is failed first shock in a spontaneous episode. In order to determine the efficacy per shock, it is important that for all shocks a separate shock page is created.

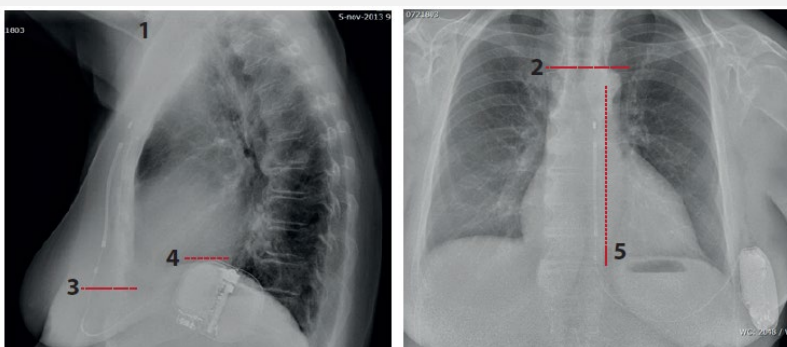
On the Arrhythmia Episode report page you can create a new report for each shock in that episode:

On the Shock report page you can indicate to which shock of the episode the report page belongs:

## REMINDER: PRAETORIAN Score - Image requirements

Please remember to always check if your image meets the PRAETORIAN Score requirements before calculating the score. If the image does not meet the requirements, you cannot calculate the score as the score is not validated for these situations.

*Also make sure all components are well visible when uploading the images to the eCRF.*



- 1) Arms should be elevated in a horizontal plane (lateral image)
- 2) The distal sensor of the lead should not be positioned higher than the clavicular bone
- 3) The proximal sensor of the lead should not be below the xiphoid
- 4) The upper side of the can should be projected over the heart
- 5) The coil should be projected over the spinal column

## Enrolments

	<b>Enrolments</b>	<b>Since last Newsletter (8 November 2019)</b>	<b>Months open</b>
Emory University Hospital, Atlanta (GE), US	37	3	14.1
AmsterdamUMC AMC, Amsterdam, NL	36		19.0
Victoria Hospital, Blackpool, UK	20	6	7.6
Barts Health, Londen, UK	19		8.4
UK Schleswig-Holstein, Lübeck, DE	11	1	6.2
Isala Klinieken, Zwolle, NL	9	2	6.8
John Radcliffe Hospital, Oxford, UK	8	1	10.9
Flevoziekenhuis, Almere, NL	7		10.7
The Mount Sinai Health, New York (NY), US	7		16.1
Basildon and Thurrock University, Basildon, UK	6	2	8.5
Catharinaziekenhuis, Eindhoven, NL	6	1	6.3
UK Schleswig-Holstein, Kiel DE	6		8.6
Papworth Hospital, Cambridge, UK	5	1	4.4
Erlanger Health System, Chattanooga (TN), US	4	1	3.1
UK Mannheim, DE	4		10.1
New Cross Hospital, Wolverhampton, UK	3	1	7.6
Corvita Science Foundation, Chicago (IL), US	3	1	7.6
St. Antoniusziekenhuis, Nieuwegein, NL	3		8.5
Northern General Hospital, Sheffield, UK	2	2	1.7
Medisch Centrum Leeuwarden, Leeuwarden, NL	2		7.6
Universitätsklinikum Würzburg, Würzburg, DE	1	1	0.7
UMCG, Groningen, NL	1	1	0.8
Canisius Ziekenhuis, Nijmegen, NL	1	1	1.5
OLVG, Amsterdam, NL	1		10.4
Liverpool Heart and Chest Hospital	0		0.2
Adventhealth, Orlando (FL) US	0		1.1

**Thank you for your continuing efforts for this trial!**



## Contact information

Trial Management

Lonneke Schats - Smeding: [l.smeding@amsterdamumc.nl](mailto:l.smeding@amsterdamumc.nl)

Anouk de Weger [a.deweger@amsterdamumc.nl](mailto:a.deweger@amsterdamumc.nl)

Monitors

Linde Vertelman [l.v.vertelman@amsterdamuc.nl](mailto:l.v.vertelman@amsterdamuc.nl)

Ingeborg Go [i.k.schon@amsterdamumc.nl](mailto:i.k.schon@amsterdamumc.nl)

Stijn Swager-ten Hoor [s.l.tenhoor@amsterdamumc.nl](mailto:s.l.tenhoor@amsterdamumc.nl)